



Spencer's

Apt 5 Botanical House, Botanical Gardens S10 2PB



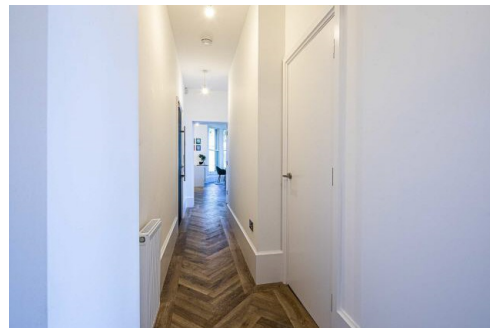
Buy ———  
A beautiful two double bedroom ground floor  
apartment in Botanical House

————— from *Spencer.*

- NOW AVAILABLE TO VIEW!
- Ground floor conversion apartment
- Two bedrooms
- En-suite bathroom
- Two parking spaces
- Predicted EPC rating C
- NEW DEVELOPMENT
- CONVERSION APARTMENT
- Views into Botanical Gardens
- High specification interiors
- My Father's Heart Siematic Kitchens
- Siemens Appliances
- CP Hart bathrooms
- Superb address
- Close to private schools, hospitals, and University
- CCTV
- 10 Year Warranty
- Video intercom
- Exceptional attention to

Price

**£425,000**









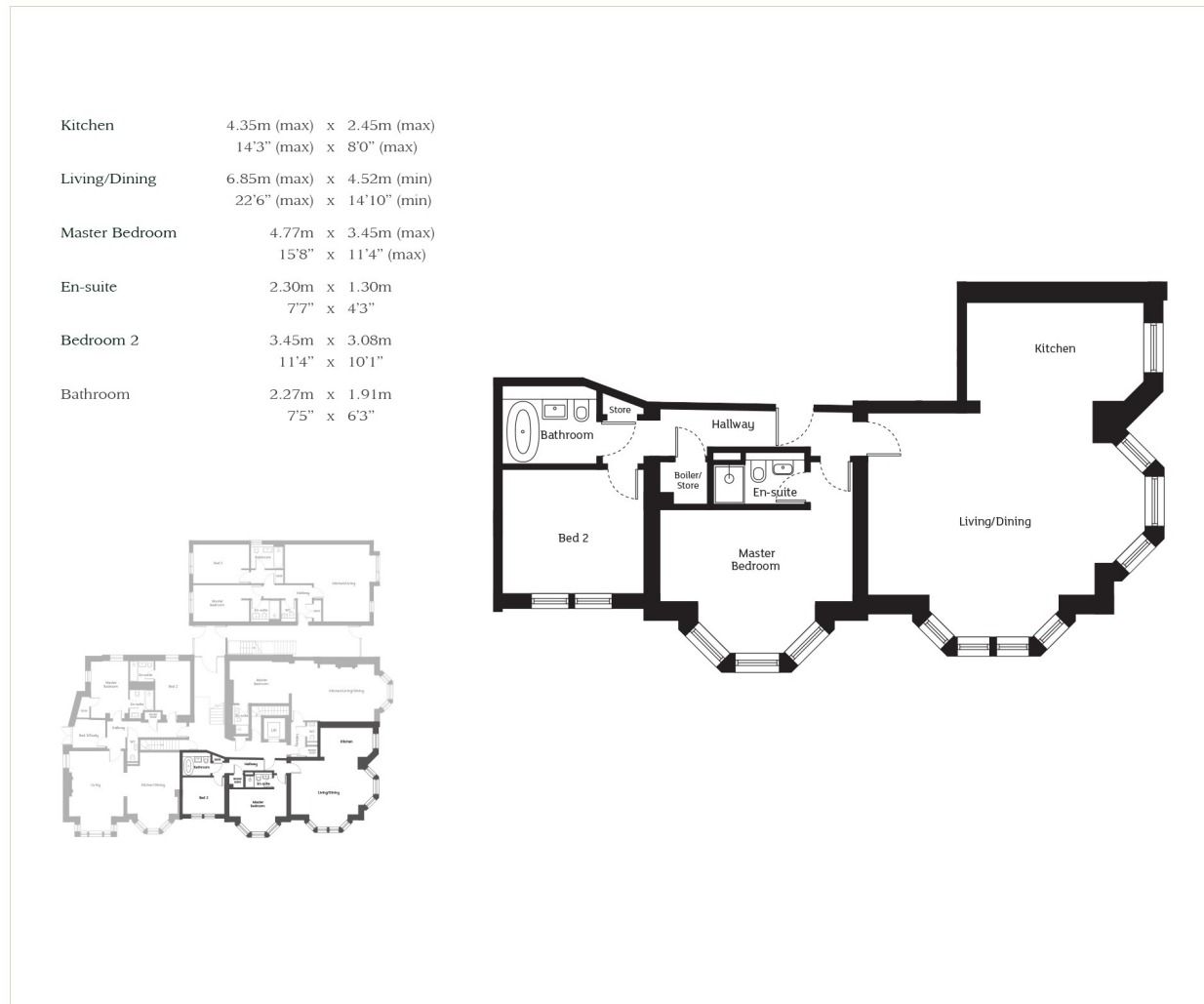








# Floor plan



Spencer.

+44 (0)114 268 3682  
info@spencersestateagents.co.uk

469 Ecclesall Road, Sheffield, S11 8PP  
SpencersEstateAgents.co.uk

SpencersAgents  
SpencersAgents  
SpencersEstateAgents

All enquiries and negotiations are conducted via the Spencers office. We are obliged under the Estate Agent Act 1991 to qualify all offers and an independent mortgage consultant will speak to you to substantiate your details. The particulars are set out as a general outline only for guidance and do not constitute part of an offer or contract. Measurements are given in good faith and believed to be correct. Any prospective buyer should satisfy themselves as to the correctness of all statements and should not rely on them as representation of fact. No person in the employment of Spencers has any authority to make or give representation or warranty whatever in relation to this property.

Viewing: Via the Agents  
Spencers Agents Ltd, 469 Ecclesall Road, Sheffield S11 8PP | Registered in England No.7565948